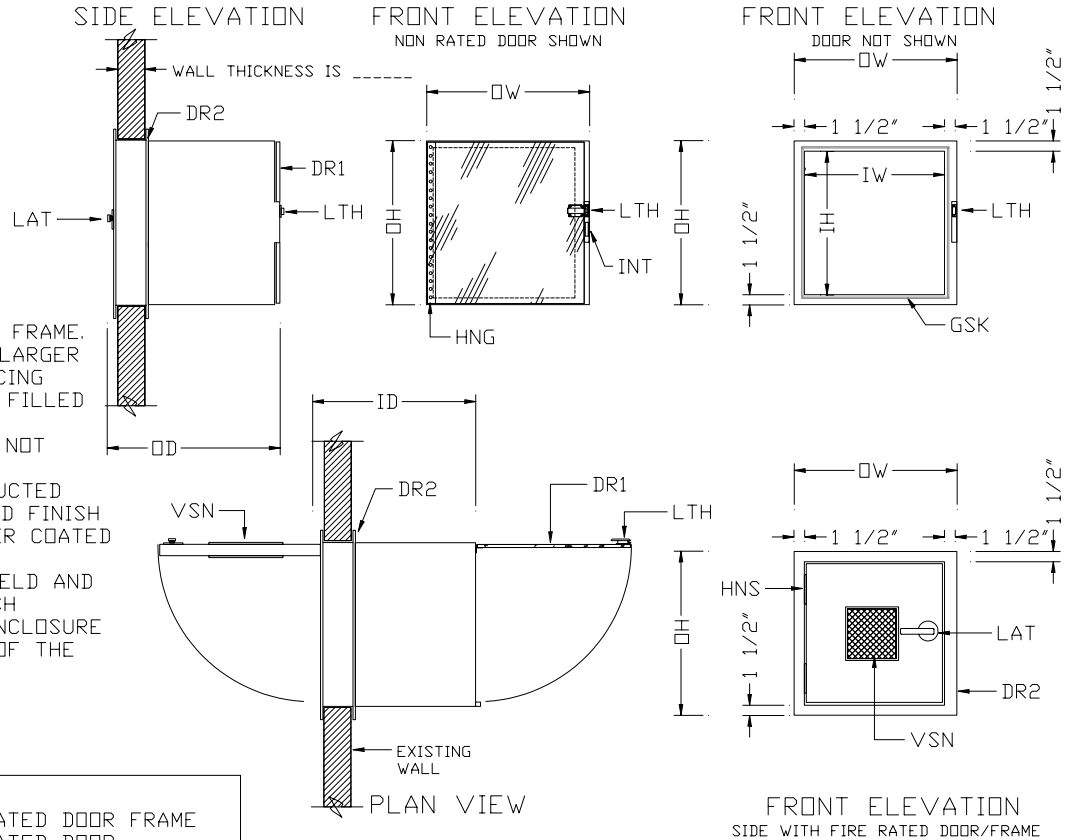


LEGEND

DR1=CLEAR ACRYLIC OR PVC DOOR
 DR2=FIRE RATED DOOR AND FRAME LISTED BY WARNOCK HERSHEY
 GSK=PEMKO #SW88 GASKET SEAL
 HNG=STAINLESS STEEL CONTINUOUS HINGE
 HNS=SPRING LOADED DOOR HINGE
 LAT=PASSAGE LOCK APPROVED FOR FIRED RATED DOORS
 LTH=CHROME PLATED SPRING LOADED LATCH
 VNS=1/4" WIRE GLASS VISION LITE

NOTES:

1. FIRE RATED FRAME IS A ONE PIECE WELDED FRAME. THE OPENING FOR THE CUTOUT MUST BE 4-6" LARGER THAN THE OH AND OW DIMENSIONS. AFTER PLACING THE PASS THRU IN PLACE THE WALL MUST BE FILLED BACK INTO THE DOOR FRAME.
2. VISION LITES FOR 90 MINUTE RATINGS CAN NOT EXCEED 100 SQUARE INCHES.
3. STAINLESS STEEL PASS THRU'S ARE CONSTRUCTED OF #304 STAINLESS STEEL WITH A #4 BRUSHED FINISH
4. PAINTED PASS THRU'S HAVE A WHITE POWDER COATED FINISH.
5. ALL EXTERIOR SEAMS HAVE A CONTINUOUS WELD AND ARE GROUND SMOOTH TO MATCH EXISTING FINISH
6. ELECTRIC INTERLOCKS REQUIRE A NEMA 1 ENCLOSURE ON TOP OF THE UNIT FOR FIELD CONNECTION OF THE POWER SUPPLY.



OPTIONS REQUIRED (CHECK ALL THAT APPLY)

<input type="checkbox"/> ELECTRIC INTERLOCKS	<input type="checkbox"/> S/S NON RATED DOOR FRAME
<input type="checkbox"/> FAN FILTER UNIT	<input type="checkbox"/> P/S NON RATED DOOR
<input type="checkbox"/> FIXED SHELF	
<input type="checkbox"/> ADJUSTABLE SHELF	
<input type="checkbox"/> ADDITIONAL SHELVES ---	
<input type="checkbox"/> AMBER TINTED DOORS	

NOTES (CHECK ALL THAT APPLY)

CONSTRUCTION MATERIALS: OTHER _____

<input type="checkbox"/> STAINLESS STEEL BODY	_____
<input type="checkbox"/> STAINLESS STEEL DOOR	_____
<input type="checkbox"/> PAINTED STEEL BODY	_____
<input type="checkbox"/> PAINTED STEEL DOOR	_____
<input type="checkbox"/> KEYED PASSAGE LOCK	_____

PASS THRU DIMENSIONS

OW	OH	OD	IW	IH	ID
			=OD-3"	=OH-3"	=OD-1.5"

CONTRACT NO.	DATE	COMPANY		
DRAWN BY HSD		ASPT Inc.		
CHECKED BY		TITLE STD PASS THRU WITH FIRE RATED DOOR		
DESIGNED BY		SIZE	FSCM NO.	DWG NO. / FILE NAME
DESIGN ACTIVITY				
CUSTOMER		SCALE	DATE	SHEET 1 of 1